

# JUKI®

No.0011-03  
1978・1  
BE2710TOPJA

model **LZ-271**

一本針本縫刺繡縫ミシン

Single Needle Embroidering Industrial Sewing Machine

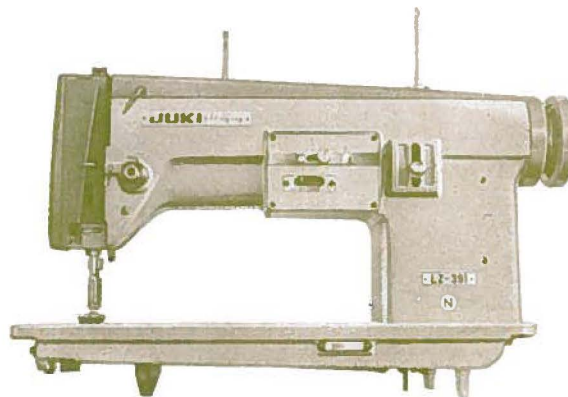
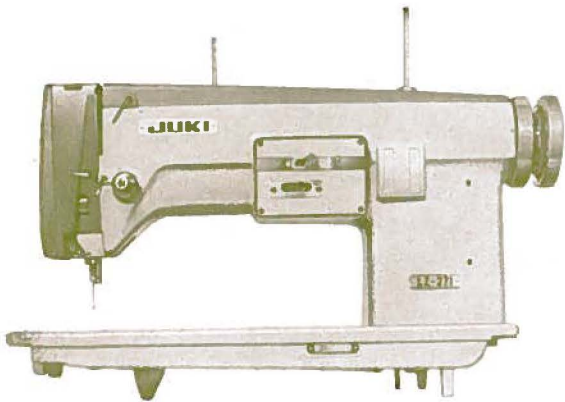
model **LZ-391N**

一本針本縫刺繡縫・千鳥縫兼用ミシン

Single Needle Lockstitch Hi-zigzag Embroidering,  
Industrial Sewing Machine

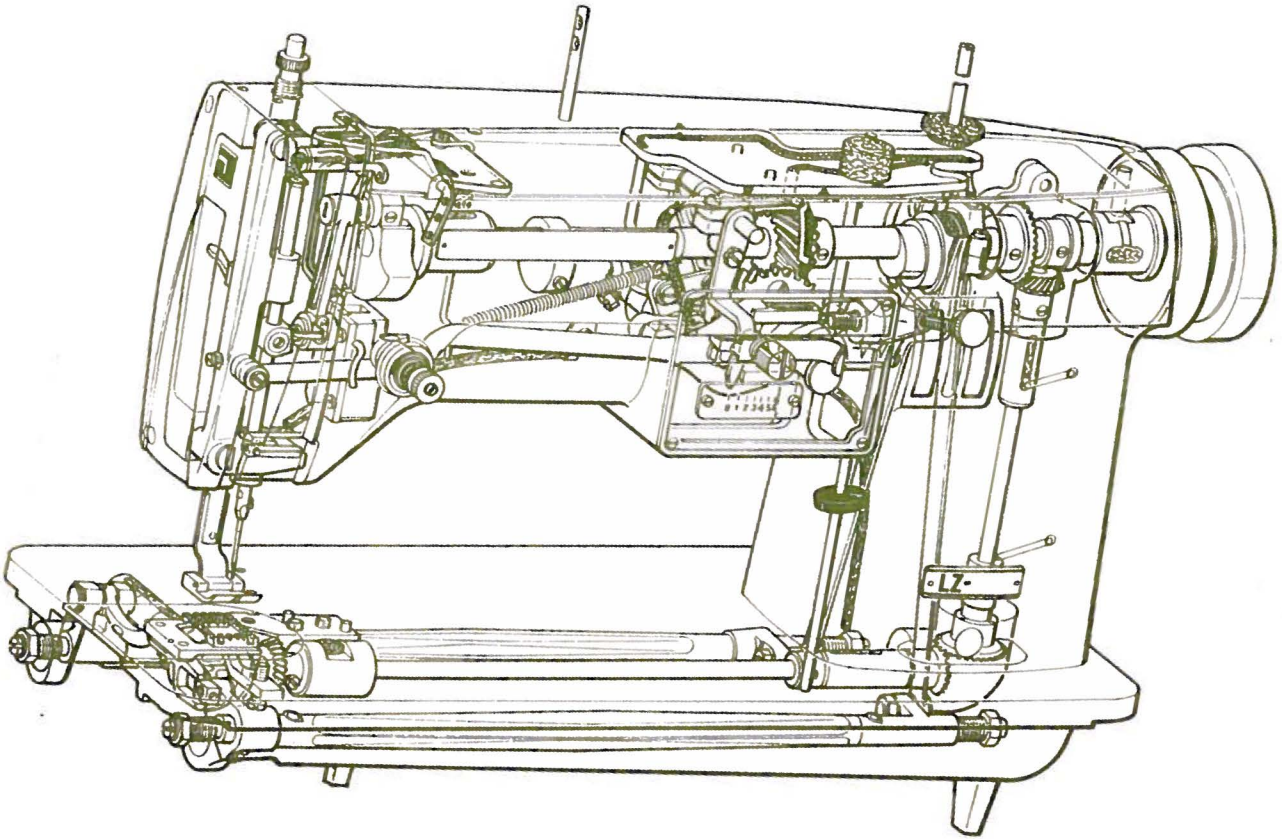
---

## PARTS BOOK



**TOKYO JUKI INDUSTRIAL CO., LTD.**

From the library of: Superior Sewing Machine & Supply LLC



## HOW TO MAKE USE OF THIS PARTS BOOK

- As a basic principle, this parts book is divided into various sections according to the functions of respective parts.
- The part numbers of parts shown in the figure indicate the corresponding numbers(Ref.No.) shown by the Index.

### 3. Explanation of codes

- ① ☆ mark ..... means this part is changed from the previous parts book.
  - ② ☆01 ..... refer to "Note" explanation at bottom of page.
- 2) Codes on the "E.C. (Engineering change)" column
- ① A.10/74 ..... Added from October, 1974
  - ② D.1/75 ..... Obsolete from January, 1975
  - ③ When D.(obsolete) and A.(added) are indicated together  
D.12/74  
A.12/74
- ④ When previous parts (Obsolete part) and new parts (Added parts) are not interchangeable with each other:  
In this case, even obsolete parts(D.) can be ordered with the obsolete part number, so select the parts with changed dates and place your orders.

(Example)

Ref. No.	Note	Part No.	Description	E.C.	品名	Amt. Req. 数量
	注記	品番		変更年月		
1	☆	B1401-100-000	Needle bar	D.12/74	ハリボー	—
1-1	☆	B1401-100-000-A	Needle bar	A.12/74	ハリボー	1

- ④ In case when previous parts and new part are interchangeable with each other:  
In this case the new part number is replaced on the "品名(Japanese)" column of the previous parts, so please order by the new part number.

(Example)

Ref. No.	Note	Part No.	Description	E.C.	品名	Amt. Req. 数量
	注記	品番		変更年月		
1	☆	B1105-200-000	Frame cover	D.12/74	B1105-300-000	—
	☆	B1105-300-000	Frame cover	A.12/74	フレームカバー	1

- ④ C.3/75 ..... This indicates error was discovered in March, 1975 and so it was corrected to a new part number.  
Please note that in this case, the corrected part number is shown in the part number column and the wrong part number is shown in the "品名(Japanese)" column, so please order by the correct part number.

(Example)

Ref. No.	Note	Part No.	Description	E.C.	品名	Amt. Req. 数量
	注記	品番		変更年月		
1	☆	B1105-500-000	Frame cover	C.3/75	<del>B1105-600-000</del>	1
		↑ Correct No.			↑ Wrong No.	

- ⑤ M.5/75 ..... The amount required is changed from March, 1975  
The new amount required is shown in the "Amt. Req." column.

### 3) Codes on the "Amt. Req." column

- ① 2 ..... Indicates amount required is 2.
- ② 2.0 ..... Indicates length in meters. (unit is meter)
- ③ — ..... Indicates parts obsolete from the parts book.
- ④ (1) ..... Indicates sub parts which construct the assembly part.  
Assembly part is shown as "asm." and クミ in Japanese, in the "Description" column.

(Example)

Ref. No.	Note	Part No.	Description	E.C.	品名	Amt. Req. 数量
	注記	品番		変更年月		
10		B1105-900-0A0	Frame cover asm.		フレームカバー クミ	1
11		B1105-900-000	Frame cover		フレームカバー	(1)
12		SS-8110310-SP	Screw 11/64-40 L=2.8		トメネジ 11/64-40 L=2.8	(2)

## REQUEST WHEN ORDERING SPARE PARTS

When ordering spare parts, always state the parts Nos. (e.g. B1109-012-A00) together with either the No. of PARTS BOOK marked on top right of the cover (e.g. No. 0010-01) or the machine No. in order to avoid mis-delivery because of possible modifications of parts.



## パーツブックの見方

- このパーツブックは、原則として、機構別に分類された各項目からなっております。
- 図に示された部品の品番は、図にふられている No.(Ref. No.) に対応するインデックスによって、その品番がわかります。

### 3. 記号の説明

#### 1) "注記" 欄の記号

- ☆印……………前回のパーツブックと比較して今回変更された部品を意味します。
- ◇印……………ページ下の"注記"の説明を参照して下さい。

#### 2) "変更年月" 欄の記号

- A. 10/74……………1974年10月より追加された。
- D. 1/75……………1975年1月より削除された。
- D. (削除)、A. (追加) が連記してある場合。  
D. 12/74  
A. 12/74

(a) 部品の互換性がない変更の場合

この場合は削除 (D) された品番でも御注文できますが、変更年月により、いずれかの部品を選択して御注文下さい。

[例]

Ref. No.	Note	Part No.	Description	E.C.	品名	Amt. Req. 数量
1	☆	B1401-100-000	Needle bar	変更年月 D.12/74	ハリボー	—
1-1	☆	B1401-100-000-A	Needle bar	A.12/74	ハリボー	1

(b) 部品の互換性がある場合の変更

この場合は、旧部品の和文品名欄にそれにかわる新しい品番が記入してありますので、新しい品番で御注文下さい。

[例]

Ref. No.	Note	Part No.	Description	E.C.	品名	Amt. Req. 数量
1	☆	B1105-200-000	Frame cover	変更年月 D.12/74	B1105-300-000	—
	☆	B1105-300-000	Frame cover	A.12/74	フレームカバー	1

- C. 3/75……………1975年3月に品番のミスが判明した為、正しい品番に訂正された。  
この場合は品番欄に正しい品番を、和文品名欄に間違いの品番が記入してありますので、正しい品番で御注文下さい。

[例]

Ref. No.	Note	Part No.	Description	E.C.	品名	Amt. Req. 数量
1	☆	B1105-500-000	Frame cover	変更年月 C.3/75	<del>B1105-600-000</del> ↑ 間違っていた品番	1

- M. 5/75……………1975年5月より数量が変更になった。  
この場合数量欄には新しい数量が表示してあります。

#### 3) "数量" 欄の記号

- 2 ……数量、2個を表わします。
- 2.0 ……長さ、2メートルを表わします。(単位はメートルです)
- ……このパーツブックから削除された部品です。
- (1) ……組部品を構成している子部品を表わします。  
組部品は品名欄に英文で "asm." と和文で "クミ" と表示してあります。

[例]

Ref. No.	Note	Part No.	Description	E.C.	品名	Amt. Req. 数量
10		B1105-900-0A0	Frame cover <b>asm.</b>	変更年月	フレームカバー <b>クミ</b>	1
11		B1105-900-000	Frame cover		フレームカバー	(1)
12		SS-8110310-SP	Screw 11/64-40 L=2.8		トメネジ 11/64-40 L=2.8	(2)

## 補用部品御注文時のお願い

このパーツブックに記載されている補用部品を御注文の際は、必要部品の番号 (例えば、B1109-012-A00) で御要求下さい。又、いろいろの事情で部品の変更をすることがありますので、御覧のパーツブックの管理番号 (表紙右上、例えば、No. 0010-01) 又は、機械番号を併せ御連絡頂ければ幸いです。

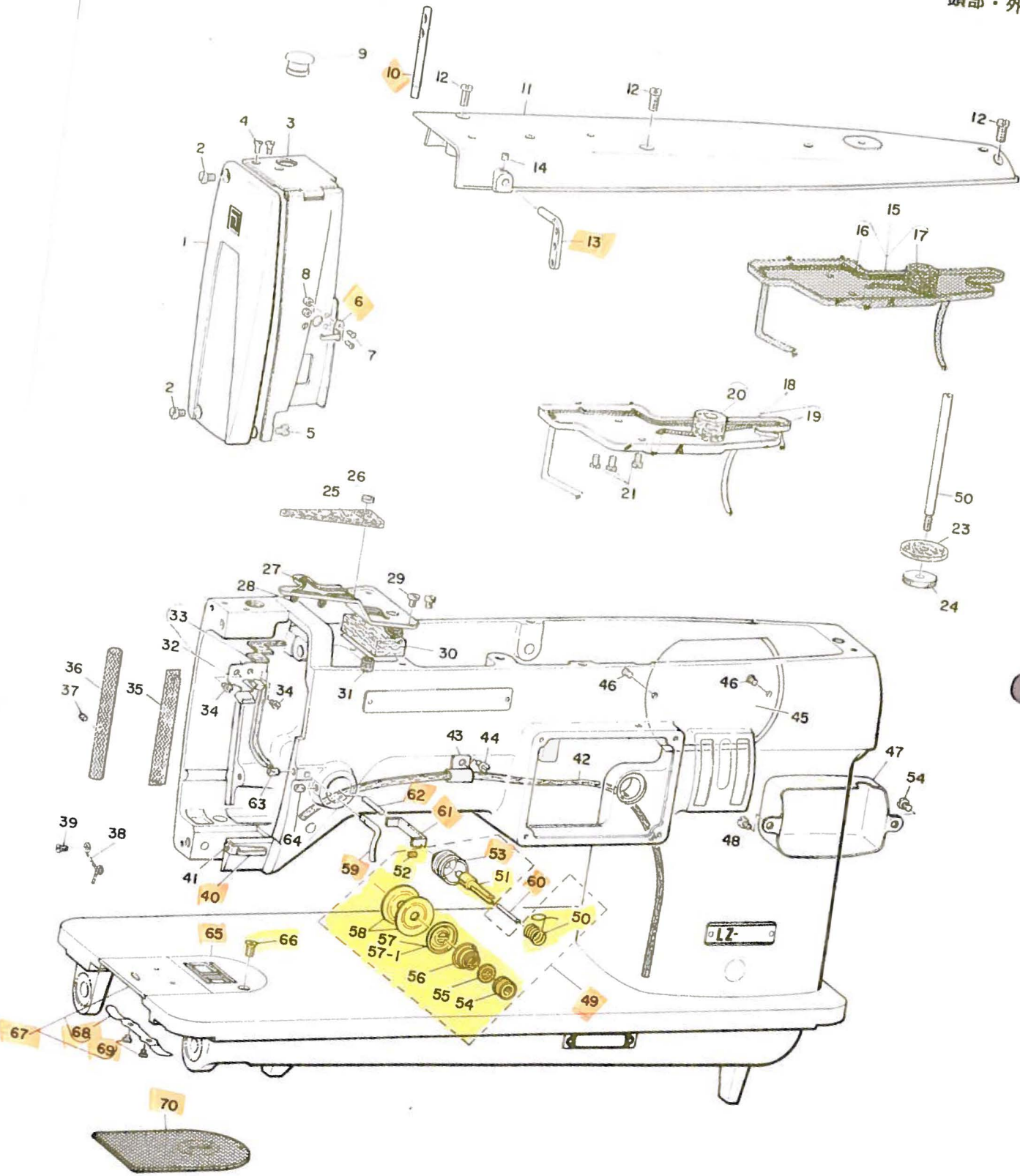


CONTENTS  
目次

1. FRAME & MISCELLANEOUS COVER COMPONENTS	
頭部・外装関係 .....	1
2. MAIN SHAFT & NEEDLE BAR COMPONENTS	
上軸・針棒関係 .....	3
3. UPRIGHT SHAFT & LOWER SHAFT COMPONENTS	
立軸・下軸関係 .....	5
4. PRESSER FOOT & FEED & KNEE LIFTER COMPONENTS (FOR LZ-391N)	
押工・送り・膝上げ関係(LZ391N用) .....	7
5. ZIGZAG REGULATOR COMPONENTS	
千鳥調節関係 .....	9
6. KNEE LIFTER & OIL RECEIVER COMPONENTS	
膝上げ装置・油受け関係 .....	11
7. SPECIAL ORDER PARTS	
特別注文部品 .....	12
8. EXCHANGING PARTS (FOR LZ-391N)	
交換部品(LZ-391N用) .....	13
9. NUMERICAL INDEX OF PARTS	
索引 .....	16

# 1. FRAME & MISCELLANEOUS COVER COMPONENTS

頭部・外装関係





1. FRAME & MISCELLANEOUS COVER COMPONENTS

頭部・外装関係

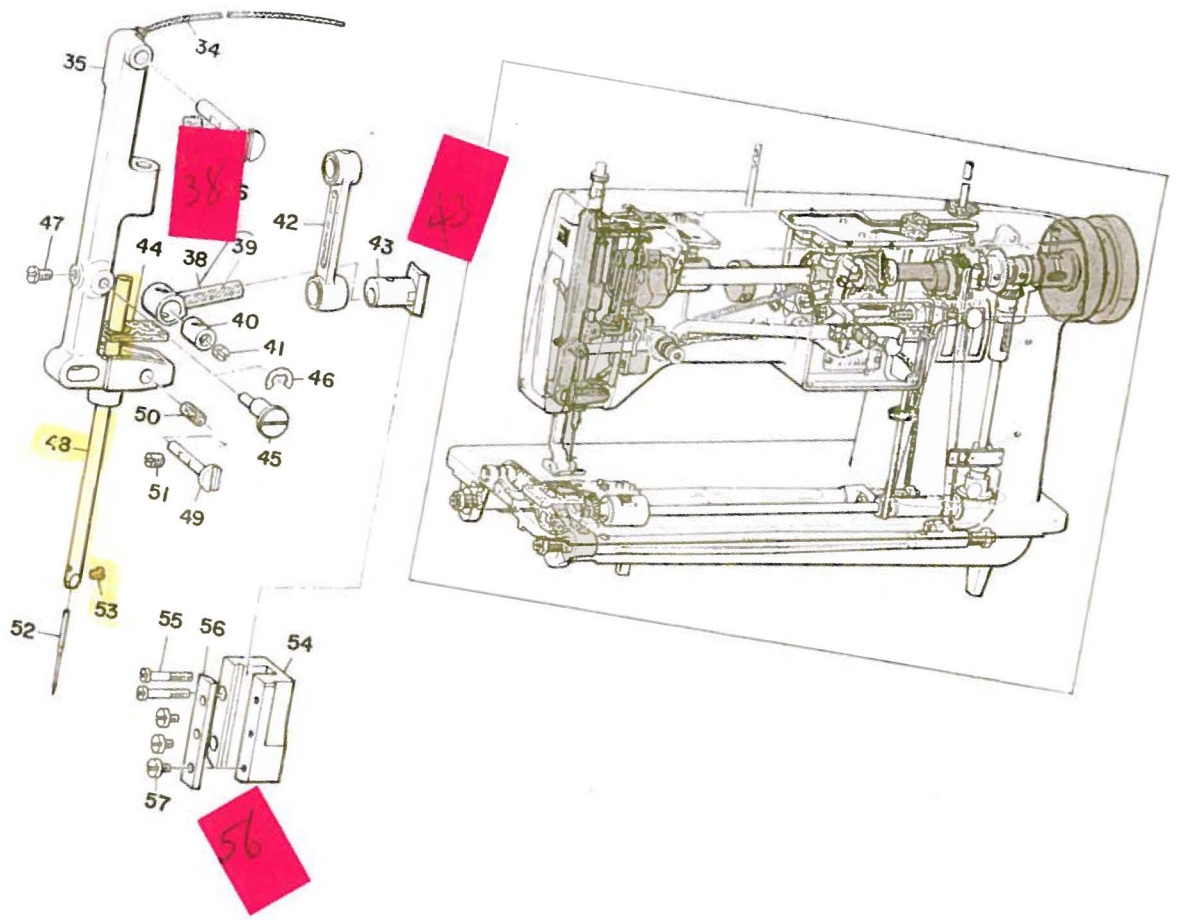
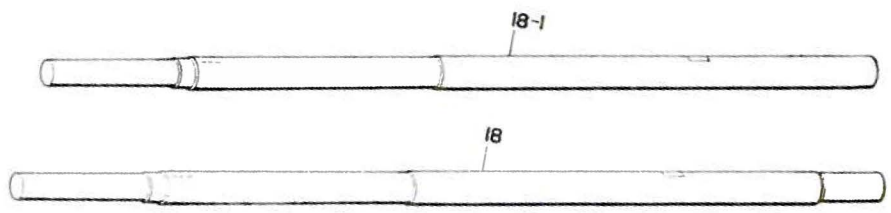
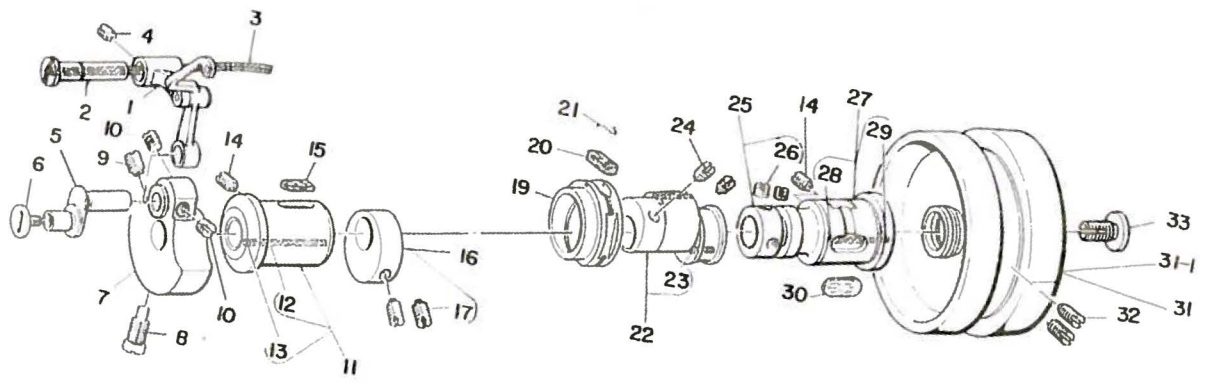
Ref. No.	Note	Part No.	Description	E.C.	Amt. Req.
	注記	品番		変更年月	数量
1		B3101-271-000	Face plate		1
2		SS-7091110-SP	Screw 9/64-40 L=10.5		2
3		B3104-271-000	Side plate		1
4		SS-2090710-SP	Screw 9/64-40 L=7.0		2
5		SS-7090510-SP	Screw 9/64-40 L=4.6		1
6		B3107-027-000	Side plate thread guide		1
7		SS-2060510-SP	Screw 3/32-56 L=4.5		2
8		NS-6060310-SP	Nut 3/32-56		2
9	001	B1164-012-000	Rubber plug, large		1
10		B1114-012-000	Thread guide pin		1
11		B1103-271-000	Top cover		1
12		SS-7111120-SP	Screw 11/64-40 L=10.5		3
13		B1128-271-000	Three hole thread eyelet		1
14		SS-8090410-SP	Screw 9/64-40 L=3.5		1
15	001	B1178-271-CB0	Arm oil tank asm.		1
16	001	B2615-232-000	Oil felt washer		(1)
17	001	CO-2000000-00	Oil wick		(0.4)
18	002	B1178-391-BB0	Arm oil tank asm.		1
19	002	B2615-232-000	Oil felt washer		(1)
20	002	CO-2000000-00	Oil wick		(0.4)
21		SS-6090620-SP	Screw 9/64-40 L=6.0		3
22		B3305-039-000	Thread spool pin		1
23		A9116-001-000	Spool pin cushion		1
24		B3316-271-000	Holder		1
25		B1182-271-000	Oil pad		1
26		B3534-012-000	Gasket		1
27		B1175-271-000	Arm oil pad cover		1
28		CO-3000000-00	Oil wick		0.6
29		SS-6090620-SP	Screw 9/64-40 L=6.0		2
30		B1177-271-000	Oil felt		1
31		B1174-271-000	Oil pad		1
32		B1168-271-0A0	Oil pad holder asm.		1
33		B1166-271-000	Oil felt		(1)
34		SS-6090510-SP	Screw 9/64-40 L=5.0		2
35	001	B1181-027-000	Gasket, for presser bar connection		1
36	001	B1501-027-000	Joint rod, for attachment		1
37	001	SS-8110750-SP	Screw 11/64-40 L=6.5		1
38	001	B1137-027-000	Frame thread guide lower		1
39	001	SS-1060610-SP	Screw 3/32-56 L=5.5		1
40	002	B1137-039-000	Frame thread guide lower		1
41	002	SS-2060510-SP	Screw 9/64-40 L=4.5		1
42		B1185-271-000	Oil return wick		0.5
43		B3537-122-000	Oil wick holder		1
44		SS-7090520-SP	Screw 9/64-40 L=4.5		1
45		B1130-271-000	Side plate		1
46		SS-2090710-SP	Screw 9/64-40 L=7.0		2
47		B1196-391-000	Helical gear cover		1
48		SS-7110710-SP	Screw 11/64-40 L=7.0		2
49		B3122-027-0A0	Thread tension controller asm.		1
50		B3128-027-000	Take-up Spring		(1)
51		B3122-027-000	Tension post		(1)
52		SS-8090670-SP	Screw 9/64-40 L=5.5		(1)
53		B3121-027-000	Tension post socket		(1)
54		B3116-125-000	Tension nut		(1)
55		B3120-125-000	Tension disc stopper		(1)
56		B3129-012-A00	Tension spring (A)		(1)
57	001	B3132-012-000	Tension disc holder		(1)
57-1	002	B3132-552-000	Tension disc holder		(1)
58		B3126-012-000	Tension disc		(2)
59		B3108-027-000	Tension post thread guide		1
60		B3127-391-000	Tension release plunger		1
61		B1528-391-000	Tension release pin connection		1
62		B1527-391-000	Tension release pin		1
63		SS-8110510-SP	Screw 11/64-40 L=5.0		1
64		SS-8110750-SP	Screw 11/64-40 L=6.5		1
65	002	B1109-391-N00	Throat plate (N)		1
66	002	SS-2110920-TP	Screw 11/64-40 L=8.5		1
67		B1110-040-0A0	Bed slide asm.		1
68		B1111-012-000	Spring		(1)
69		SS-6060210-SP	Screw 3/32-56 L=1.9		(2)
70	001	B1109-027-AA0	Throat plate asm.		1

Note (注記) 001 ..... For LZ-271 LZ-271用  
 002 ..... For LZ-391N LZ-391N用



# 2. MAIN SHAFT & NEEDLE BAR COMPONENTS

上軸・針棒関係



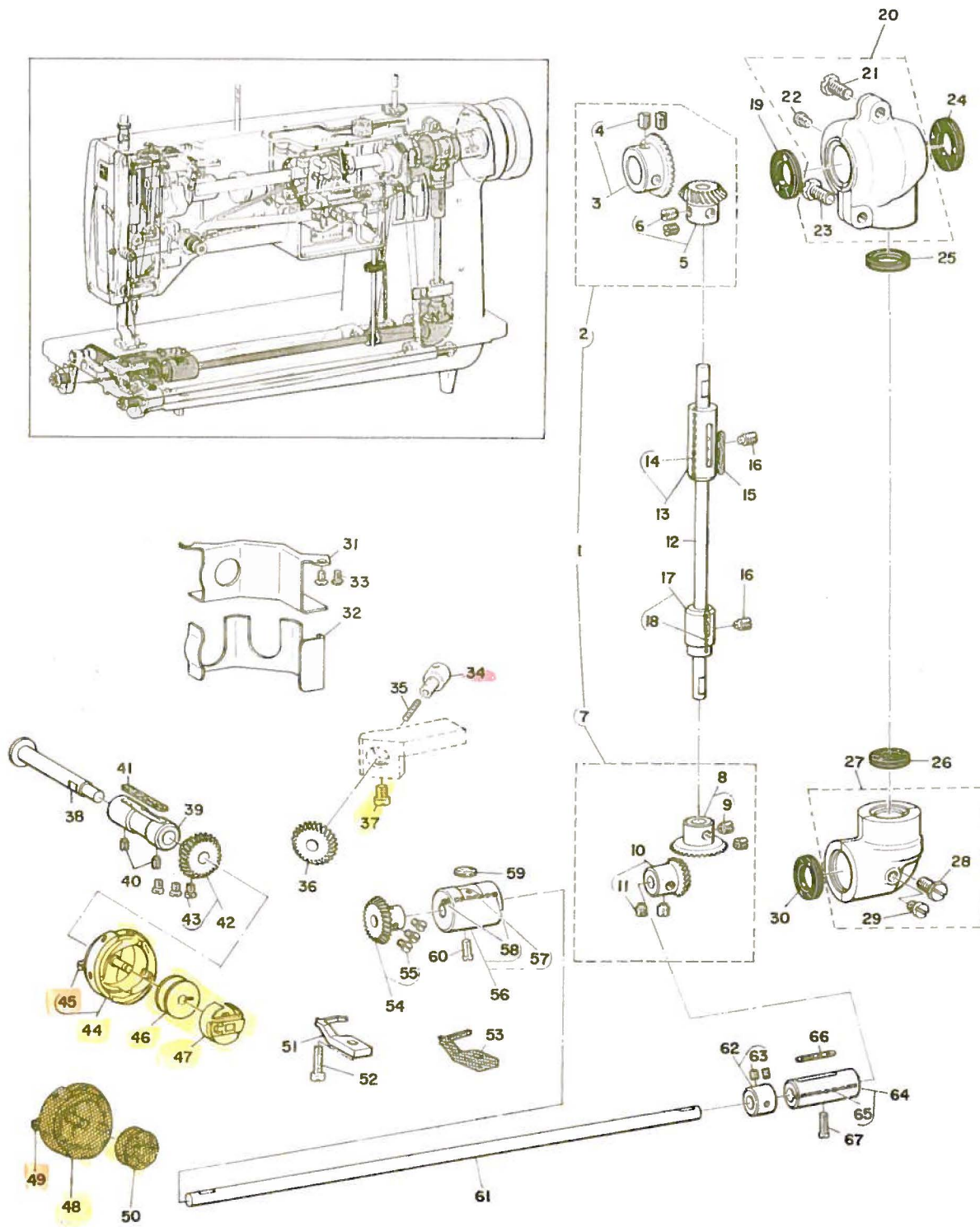
2. MAIN SHAFT & NEEDLE BAR COMPONENTS

上軸・針棒関係

Ref. No.	Note	Part No.	Description	E.C.	Amt. Req.
注記	品番			変更年月	数量
1		B1911-027-0B0	Thread take-up lever asm.		1
2		B1913-271-000	Take-up lever pin		1
3		CO-3000000-00	Oil wick		0.2
4		SS-8151150-SP	Screw 15/64-28 L=10.5		1
5		B1209-027-000	Needle bar crank (NISSAN MODEL IT)		1
6		B1208-027-000	End screw		1
7		B1206-271-000	Counterweight		1
8		SS-7681750-TP	Screw (A)		1
9		SS-8681130-SP	Screw 9/32-28 L=11.0		1
10		SS-8660610-TP	Screw 1/4-40 L=6.0		2
11		B1202-009-0A0	Main shaft bushing asm., front		1
12		CO-2020000-00	Oil wick		(0.1)
13		TA-0300503-R0	Plug 3.0 L=4.5		(1)
14		SS-8151150-SP	Screw 15/64-28 L=10.5		2
15		B1203-012-000	Oil felt		1
16		B1235-271-0A0	Auxiliary counterweight asm.		1
17		SS-8151350-SP	Screw 15/64-28 L=13.0		(2)
18	☆	B1201-027-000	Main shaft	D.9/76	—
18-1	☆	B1201-271-000	Main shaft	A.9/76	1
19		B1211-226-000	Feed drive eccentric retainer bushing		1
20		B1212-012-000	Oil felt		1
21		B1213-012-000	Felt retainer		1
22		B1210-040-0B0	Feed eccentric asm.		1
23		CO-2020000-00	Oil wick		(0.1)
24		SS-8150710-SP	Screw 15/64-28 L=7.0		(2)
25		CS-147121B-SH	Thrust collar asm.		1
26		SS-8660530-TP	Screw 1/4-40 L=4.5		(2)
27		B1216-009-0A0	Main shaft bushing asm., rear		1
28		CO-2020000-00	Oil wick		(0.1)
29		TA-0300503-R0	Plug 3.0 L=4.5		(1)
30		B1218-012-000	Rear bushing oil felt		1
31	☆	B1213-391-000	Hand wheel	D.9/76	—
31-1	☆	B1213-391-000-A	Hand wheel	A.9/76	1
32		SS-8151550-SP	Screw 15/64-28 L=15.0		2
33		B1233-012-000	End screw		1
34		CO-3000000-00	Oil wick		0.4
35		B1421-271-000	Needle bar frame		1
36		B1422-027-000	Hinge pin		1
37		SS-8150710-SP	Screw 15/64-28 L=7.0		1
38		B1411-271-000	Needle bar connection asm.		1
39		CO-5022000-00	Oil wick		(0.1)
40		B1427-271-000	Bushing		1
41		SS-8150410-SP	Screw 15/64-28 L=4.0		1
42		B1408-271-000	Needle bar crank connecting rod (B)		1
43		B1414-271-B00	Eccentric slider (B)		1
44		B1434-027-000	Oil pad		1
45		B1429-027-000	Eccentric stud		1
46		RE-0600000-K0	Snap ring 6.0		1
47		SS-7110710-SP	Screw 11/64-40 L=7.0		1
48		B1401-271-000	Needle bar		1
49		B1424-027-000	Needle bar frame guide pin		1
50		B1432-027-000	Oil pad roller		1
51		SS-8150710-SP	Screw 15/64-28 L=7.0		1
52		MDB-100B1100	Needle (DBx1 #11)		1
53		SS-7080510-SP	Screw 1/8-44 L=4.5		1
54		B1415-271-B00	Bracket (B)		1
55		SS-6092120-SP	Screw 9/64-40 L=21.2		2
56		B1413-271-000	Position plate		1
57		SS-7081310-SP	Screw 1/8-44 L=12.5		3

3. UPRIGHT SHAFT & LOWER SHAFT COMPONENTS

立軸・下軸関係





3. UPRIGHT SHAFT & LOWER SHAFT COMPONENTS

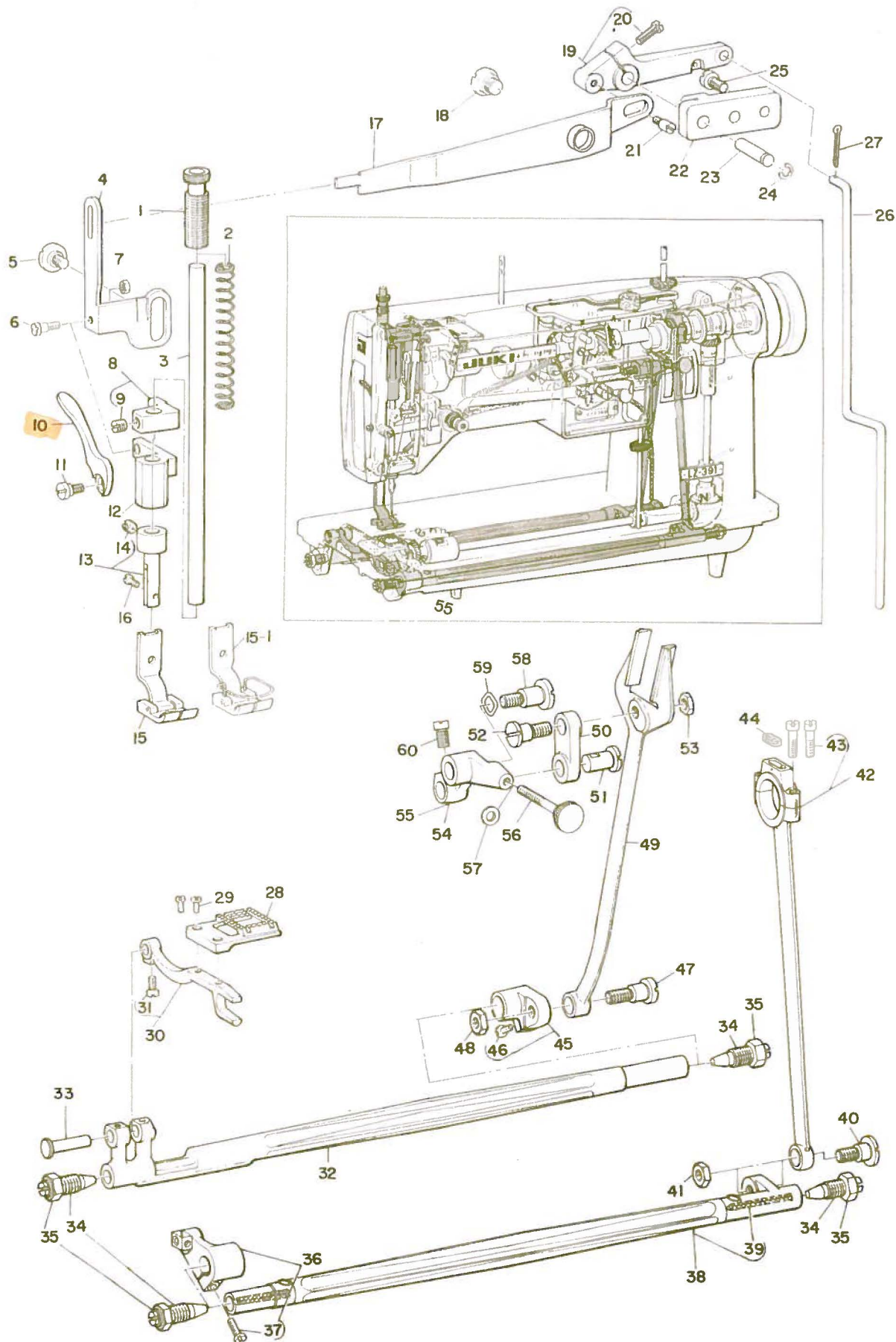
立軸・下軸関係

Ref. No.	Note	Part No.	Description	E.C. 変更年月	品名	Amt. Req. 数量
	注記	品番				
1		B1305-012-0C0	Gear & pinion asm.		カサ歯車 (上下組)	1
2		B1305-012-0B0	Gear & pinion asm., upper		上カサ歯車 (組)	(1)
3		B1305-012-0A0	Gear asm.		上カサ歯車 (大)(組)	(1)
4		SS-8660810-TP	Screw 1/4-40 L=8.0		上カサ歯車 (大) 止ネジ	(2)
5		B1306-012-0A0	Pinion asm.		上カサ歯車 (小)(組)	(1)
6		SS-8660810-TP	Screw 1/4-40 L=8.0		上カサ歯車 (小) 止ネジ	(2)
7		B1307-012-AB0	Gear & pinion asm., lower		下カサ歯車 (組)	(1)
8		B1307-012-AA0	Gear asm.		下カサ歯車 (大)(組)	(1)
9		SS-8660810-TP	Screw 1/4-40 L=8.0		下カサ歯車 (大) 止ネジ	(2)
10		B1307-012-BA0	Pinion asm.		下カサ歯車 (小)(組)	(1)
11		SS-8660810-TP	Screw 1/4-40 L=8.0		下カサ歯車 (小) 止ネジ	(2)
12		B1301-027-000	Upright shaft		立軸	1
13		B1302-012-0A0	Upright shaft bushing asm., upper		立軸上メタル (組)	1
14		CQ-2000000-00	Oil wick		立軸上メタル油心	(0.1)
15		B1304-012-A00	Felt		立軸上メタルフェルト	1
16		SS-8151150-SP	Screw 15/64-28 L=10.5		立軸メタル止ネジ	2
17		B1303-012-0A0	Upright shaft bushing asm., lower		立軸下メタル (組)	1
18		CQ-2000000-00	Oil wick		立軸下メタル油心	(0.1)
19		B1310-012-000	Oil seal (A)		オイルシール (A)	1
20		B1308-012-080	Gear case asm., upper		上歯車ケース (組)	1
21		SS-9181520-CP	Screw 9/32-20 L=15.0		上歯車ケース止ネジ	(1)
22		SS-6160680-SP	Screw		上歯車ケース油穴ネジ	(1)
23		SS-9181520-CP	Screw 9/32-20 L=15.0		上歯車ケース止ネジ	(1)
24		B1311-012-000	Oil seal (B)		オイルシール (B)	1
25		B1312-012-000	Oil seal (C)		オイルシール (C)	1
26		B1313-012-000	Oil seal (D)		オイルシール (D)	1
27		B1309-012-0B0	Gear case asm., lower		下歯車ケース (組)	1
28		SS-9181520-CP	Screw 9/32-20 L=15.0		下歯車ケース止ネジ	(1)
29		SS-6160680-SP	Screw		下歯車ケース油穴ネジ	(1)
30		B1314-012-000	Oil seal (E)		オイルシール (E)	1
31		B1865-391-C00	Helical gear cover (C)		カサ歯車カバー (C)	1
32		B1864-391-C00	Helical gear case (C)		カサ歯車ケース (C)	1
33		SS-3090610-SP	Screw 9/64-40 L=6.0		カサ歯車カバー止ネジ	2
34		B1833-391-C00	Helical gear shaft intermediate (C)		中間カサ歯車軸 (C)	1
35		CQ-3000000-00	Oil wick		中間カサ歯車軸 (C) 油心	0.1
36		B1852-391-C00	Helical gear intermediate (C)		中間カサ歯車 (C)	1
37		SS-7150940-SP	Screw 15/64-28 L=9.0		中間カサ歯車軸止ネジ	1
38		B1850-391-B00	Hook shaft (B)		カマ軸 (B)	1
39		B1813-391-C00	Hook shaft bushing (C)		カマ軸メタル (C)	1
40		SS-8110750-SP	Screw 11/64-40 L=6.5		カマ軸メタル (C) 止ネジ	2
41		B1816-271-B00	Hook shaft bushing felt (B)		カマ軸メタルフェルト (B)	1
42		B1853-391-CA0	Hook shaft helical gear asm. (C)		カマ軸カサ歯車 (C)(組)	1
43		SS-6110620-TP	Screw 11/64-40 L=5.5		カマ軸カサ歯車 (C) 止ネジ	(3)
44	002	B1830-710-0A0	Hook asm.		カマ (組)	1
45	002	SS-6110460-TP	Screw		外ガマ止ネジ	(3)
46	002	B9117-039-000	Bobbin		ホビン	1
47		B1837-027-0A0	Bobbin case asm.		ホビンケース	1
48	001	B1830-027-0A0	Sewing hook asm.		カマ (組)	1
49	001	SS-6110460-TP	Screw		外ガマ止ネジ	(3)
50	001	B9117-012-000	Bobbin		ホビン	1
51	002	B1835-039-000	Bobbin case positioning finger		中ガマ押エ	1
52		SS-6111620-SP	Screw 11/64-40 L=16.0		中ガマ押エ止ネジ	1
53	001	B1835-027-000	Bobbin case positioning finger		中ガマ押エ	1
54		B1851-391-CA0	Lower shaft helical gear asm.		下軸カサ歯車 (組)	1
55		SS-6110620-TP	Screw 11/64-40 L=5.5		下軸カサ歯車止ネジ	(3)
56		B1802-027-0A0	Lower shaft bushing asm., front		下軸前メタル (組)	1
57		CQ-2020000-00	Oil wick		下軸前メタル油心	(0.1)
58		TA-0300503-R0	Plug 3.0 L=4.5		油心止め栓	(2)
59		B1805-009-000	Felt		下軸前メタルフェルト	1
60		SS-6111440-SP	Screw 11/64-40 L=14.0		下軸前メタル止ネジ	1
61		B1801-391-B00	Lower shaft (B)		下軸 (B)	1
62		CS-0721210-SH	Thrust collar asm.		下軸スラスト受ケ (組)	1
63		SS-8110510-SP	Screw 11/64-40 L=5.0		下軸スラスト受ケ止ネジ	(2)
64		B1302-012-0A0	Lower shaft bushing asm., rear		下軸後メタル (組)	1
65		CQ-2000000-00	Oil wick		下軸後メタル油心	(0.1)
66		B1304-012-A00	Felt		下軸後メタルフェルト	1
67		SS-6111110-SP	Screw 11/64-40 L=11.0		下軸後メタル止ネジ	1

Note (注記) 001 ..... For LZ-271 LZ-271用  
002 ..... For LZ-391N LZ-391N用

4. PRESSER FOOT & FEED & KNEE LIFTER COMPONENTS (FOR LZ-391N)

押工・送り・膝上げ関係(LZ-391N用)





4. PRESSER FOOT & FEED COMPONENTS (FOR LZ-391N)

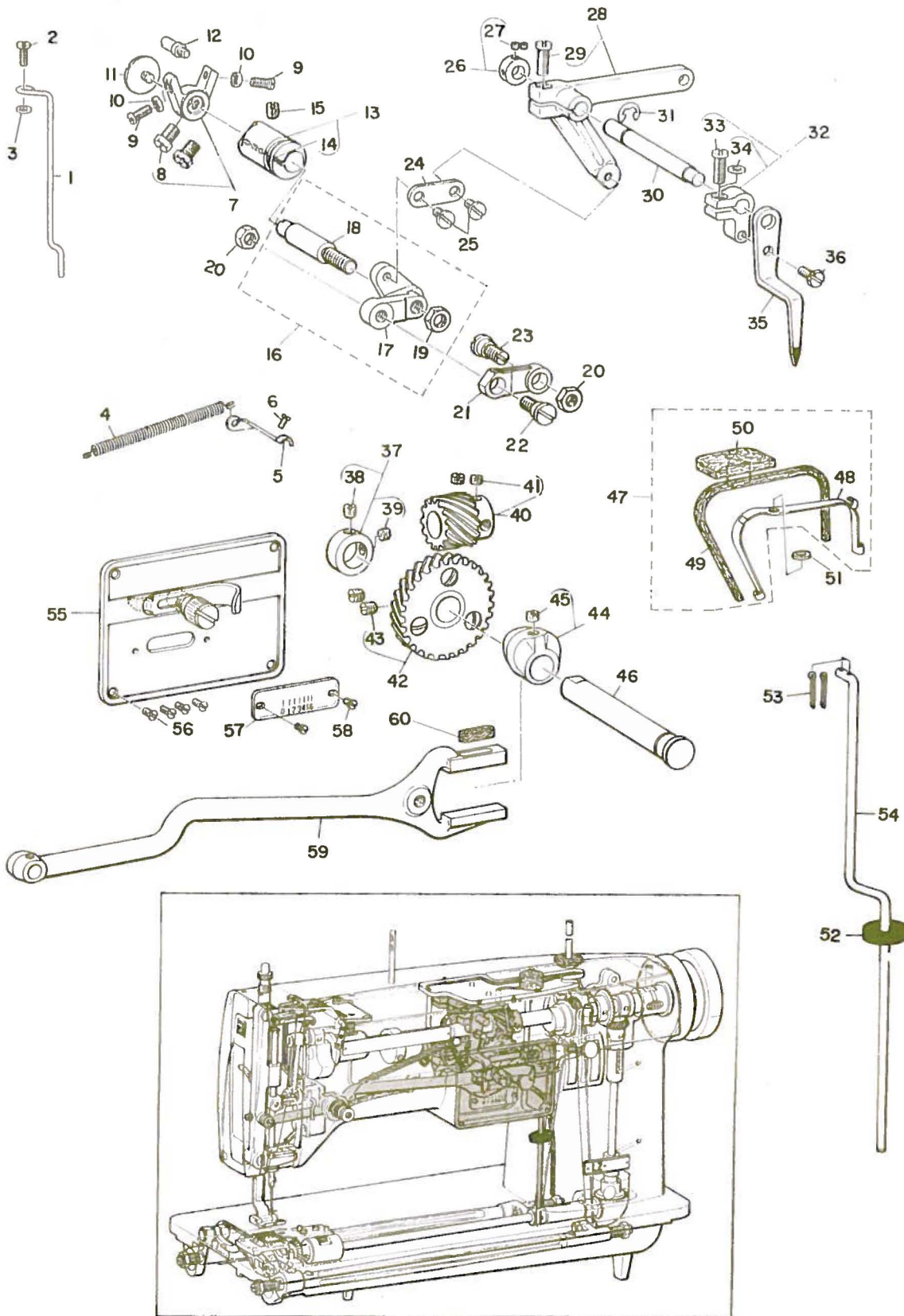
押エ・送り・膝上ゲ関係(LZ-391N用)

Ref. No.	Note	Part No.	Description	E.C.	Amt. Req.
	注記	品番		変更年月	数量
1		B1509-012-000	Presser spring regulator		1
2		B1505-040-000	Presser spring		1
3		B1501-391-000	Presser bar, joint rod type		1
4		B1518-040-000	Lifting lever		1
5		SD-0920321-SP	Hinge screw D=9.20 H=3.2		1
6		SD-0460571-SD	Hinge screw D=4.60 H=5.7		1
7		NS-6110310-SP	Nut 11/64-40		1
8		B1507-040-0A0	Presser bar guide bracket asm.		1
9		SS-8150710-SP	Screw 15/64-28 L=7.0		(1)
10		<b>A1512-007-000</b>	Hand lifter		1
11		SD-0700251-SP	Hinge screw D=7.00 H=2.5		1
12		B1511-040-000	Hand lifter lever bracket		1
13		B1502-391-AA0	Presser bar joint rod (A) asm.		1
14		SS-8660530-TP	Screw 1/4-40 L=4.5		(1)
15		B1524-391-DA0	Presser foot (D) asm.		1
15-1		B1524-391-DB0	Presser foot (D) asm.	A.3/76	1
16		SS-6090910-SP	Screw 9/64-40 L=9.0		1
17		B3406-391-0A0	Knee lifter lever asm.		1
18		SD-1150701-SP	Hinge screw D=11.50 H=7.0		1
19		B2120-027-0AB	Zigzag regulating link asm.		1
20		SS-7111410-SP	Screw 11/64-40 L=14.0		(1)
21		B3409-040-000	Connecting pin		1
22		B3410-391-000	Knee lifter lever bearing		1
23		B3411-391-000	Hinge pin		1
24		RE-0500000-K0	Snap ring 5.0		1
25		SS-6151440-SP	Screw 15/64-28 L=14.0		2
26		B3413-391-A00	Lifting rod (A)		1
27		PD-0201500-00	Cotter pin		1
28		B1613-391-N00	Feed dog (N)		1
29		SS-4080620-TP	Screw 1/8-44 L=6.4		2
30		B1602-040-0A0	Feed bracket asm.		1
31		SS-4090810-SP	Screw 9/64-40 L=8.0		(1)
32		B1601-391-B00	Feed rock shaft (B)		1
33		B1604-391-B00	Feed bar shaft (B)		1
34		B1113-012-000	Center screw		4
35		NS-6740510-SP	Nut 3/8-28		4
36		B1706-012-0B0	Feed driving shaft crank asm.		1
37		SS-7111410-SP	Screw 11/64-40 L=14.0		(1)
38		B1704-012-0A0	Feed driving shaft asm.		1
39		CQ-2020000-00	Oil wick		(0.1)
40		SD-1020710-SP	Hinge screw D=10.20 H=7.0		1
41		NS-6680410-SP	Nut 9/32-28		1
42		B1701-040-0A0	Feed driving shaft connecting rod asm.		1
43		SS-6121610-SP	Screw 3/16-28 L=15.5		(2)
44		B1702-012-000	Oil felt		1
45		B1612-012-0A0	Feed rock shaft crank asm.		1
46		SS-7111410-SP	Screw 11/64-40 L=14.0		(1)
47		SD-1020961-SP	Hinge screw D=10.20 H=9.6		1
48		NS-6680410-SP	Nut 9/32-28		1
49		B1614-040-000	Pitman		1
50		B1619-226-000	Feed regulator connecting link		1
51		B1618-226-000	Hinge pin		1
52	☆	SD-0950802-SP	Hinge screw D=9.53 H=8.0	D.3/76	—
	☆	SD-0950802-SH	Hinge screw D=9.53 H=8.0	A.3/76	1
53		NS-6680410-SP	Nut 9/32-28		1
54		B1622-391-000	Feed regulator	D.1/75	—
55		B1622-391-000-A	Feed regulator	A.1/75	1
56		B1628-040-000	Reverse feed control knob		1
57		WP-0501016-SP	Washer		1
58		SD-1021251-SP	Hinge screw D=10.20 H=12.5		1
59		B1632-040-000	Washer		1
60		SS-6661110-SP	Screw 1/4-40 L=11.0		1



5. ZIGZAG REGULATOR COMPONENTS

千鳥調節關係



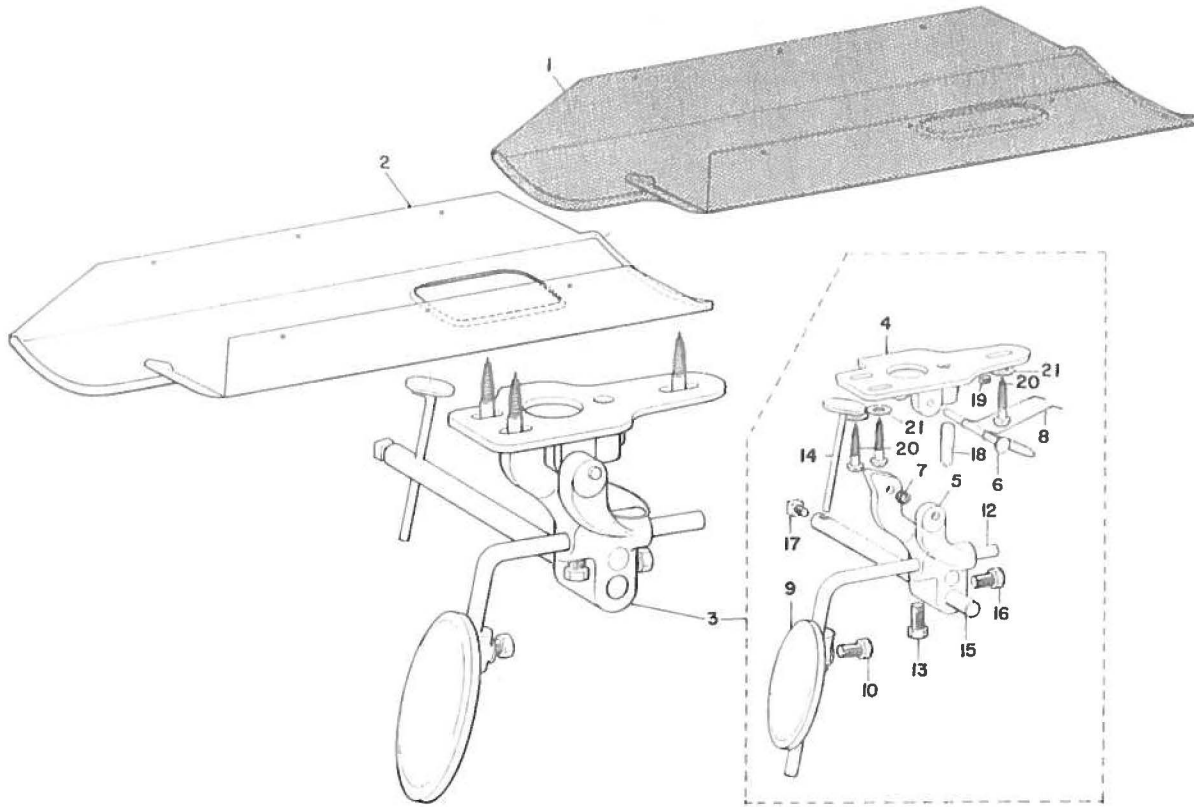
5. ZIGZAG REGULATOR COMPONENTS

千鳥調節関係

Ref. No.	Note	Part No.	Description	E.C.	品名	Amt. Req.
号	注記	部品番		変更年月		数量
1		B3412-271-000	Lifting spring catch .....		突キ上ゲバネ受ケ .....	1
2		SS-7091110-SP	Screw 9/64-40 L=10.5 .....		突キ上ゲバネ受ケ止ネジ .....	1
3		WP-0371016-SD	Washer 3.7x8.0x1.0 .....		突キ上ゲバネ受ケ座金 .....	1
4		B3419-271-000	Lifting spring .....		突キ上ゲバネ .....	1
5		B3414-271-000	Lifting spring catch (B) .....		突キ上ゲバネ受ケ (B) .....	1
6		SS-6090610-SP	Screw 9/64-40 L=5.5 .....		突キ上ゲバネ受ケ (B) 止ネジ .....	1
7		B2114-271-0A0	Zigzag regulator stud collar asm. ....		千鳥調節軸カラー (組) .....	1
8		SS-9660720-SP	Screw 1/4-40 L=6.0 .....		千鳥調節軸カラー止ネジ .....	(2)
9		SS-6111110-SP	Screw 11/64-40 L=11.0 .....		振巾ストッパー止ネジ .....	2
10		NS-6110310-SP	Nut 11/64-40 .....		振巾ストッパー止ネジナット .....	2
11		B1630-027-000	Zigzag regulator stud forcing screw .....		千鳥調節軸押し上ゲネジ .....	1
12		B1631-012-B00	Suspension stud (B) .....		指針ストッパー (B) .....	1
13		B2129-271-BA0	Zigzag regulator stud lushing (B) asm. ....		千鳥調節軸メタル (B)(組) .....	1
14		CQ-3000000-00	Oil wick .....		千鳥調節軸メタル (B) 油心 .....	(0.1)
15		SS-8150710-SP	Screw 15/64-28 L=7.0 .....		千鳥調節軸メタル (B) 止ネジ .....	1
16		B2107-271-0A0	Zigzag regulator asm. ....		千鳥調節器 (組) .....	1
17		B2107-271-000	Zigzag regulator .....		千鳥調節器 .....	(1)
18		B2108-271-000	Zigzag regulator stud .....		千鳥調節軸 .....	(1)
19		NS-6700420-SP	Nut 5/16-24 .....		千鳥調節軸ナット .....	(1)
20		NS-6680410-SP	Nut 9/32-28 .....		千鳥二又リンクナット .....	2
21		B2119-271-B00	Zigzag regulator link (B) .....		千鳥二又リンク (B) .....	1
22		SD-0950806-SP	Hinge screw D=9.53 H=8.0 .....		千鳥二又リンク段ネジ (A) .....	1
23	☆	SD-0950802-SP	Hinge screw D=9.53 H=8.0 .....	D.3/76	SD-0950802-SH .....	-
	☆	SD-0950802-SH	Hinge screw D=9.53 H=8.0 .....	A.3/76	千鳥二又リンク段ネジ (B) .....	1
24		B2115-271-000	Needle throw link .....		振巾リンク .....	1
25		SD-0640231-SP	Hinge screw D=6.35 H=2.3 .....		振巾リンク段ネジ .....	2
26		CS-079061A-SC	Thrust collar asm. ....		突キ上ゲ腕スラストカラー (組) .....	1
27		SS-8090410-SP	Screw 9/64-40 L=3.5 .....		突キ上ゲ腕スラストカラー止ネジ .....	(2)
28		B2120-271-0A0	Lifting crank asm. ....		突キ上ゲ腕 (組) .....	1
29		SS-6121610-SP	Screw 3/16-28 L=15.5 .....		突キ上ゲ腕締ネジ .....	(1)
30		B2122-271-000	Lifting crank shaft .....		突キ上ゲ腕軸 .....	1
31		RE-0500000-K0	Snap ring 5.0 .....		突キ上ゲ腕軸Eリング .....	1
32		B2109-271-0A0	Indicator bearing bracket asm. ....		指針ボス (組) .....	1
33		SS-7121410-SP	Screw 3/16-28 L=14.0 .....		指針ボス締ネジ .....	(1)
34		WP-0480856-SP	Washer 4.8x8.4x0.8 .....		指針ボス締ネジ座金 .....	(1)
35		B2110-271-000	Indicator .....		指針 .....	1
36		SS-9121340-CP	Screw 3/16-28 L=13.0 .....		指針止ネジ .....	1
37		CS-128101A-SH	Thrust collar asm. ....		ネジ歯車スラストカラー (組) .....	1
38		SS-8150510-TP	Screw 15/64-28 L=4.7 .....		ネジ歯車スラストカラー止ネジ (B) .....	(1)
39		SS-8150410-TP	Screw 15/64-28 L=4.0 .....		ネジ歯車スラストカラー止ネジ (A) .....	(1)
40		B2101-271-0A0	Bevel gear asm. (SMALL) .....		ネジ歯車 (小)(組) .....	1
41		SS-8660330-SP	Screw 1/4-40 L=3.0 .....		ネジ歯車 (小) 止ネジ .....	(2)
42		B2102-271-0A0	Bevel gear asm. (LARGE) .....		ネジ歯車 (大)(組) .....	1
43		SS-8660810-TP	Screw 1/4-40 L=8.0 .....		ネジ歯車 (大) 止ネジ .....	(2)
44		B1210-271-0A0	Zigzag triangular cam asm. ....		千鳥三角カム (組) .....	1
45		SS-8151150-SP	Screw 15/64-28 L=10.5 .....		千鳥三角カム止ネジ .....	(1)
46		B2103-271-B00	Bevel gear shaft (B) .....		ネジ歯車軸 (B) .....	1
47		B1190-271-0A0	Oil pad holder asm. ....		千鳥二又ロッド給油金具 (組) .....	1
48		B1190-271-000	Oil pad holder .....		千鳥二又ロッド給油金具 .....	(1)
49		B1191-271-000	Oil felt (A) .....		千鳥二又ロッド給油フェルト (A) .....	(1)
50		B1192-271-000	Oil felt (B) .....		千鳥二又ロッド給油フェルト (B) .....	(1)
51		WP-0480856-SP	Washer 4.8x8.4x0.8 .....		千鳥二又ロッド給油金具座金 .....	1
52		B3415-707-000	Oil seal washer .....		突キ上ゲ棒油止メ .....	1
53		PD-0201500-00	Cotter pin .....		突キ上ゲ棒割ピン .....	2
54		B3413-271-B00	Lifting rod (B) .....		突キ上ゲ棒 (B) .....	1
55		B2104-271-0A0	Zigzag scale installing plate asm. ....		千鳥裏板 (組) .....	1
56		SS-2090710-SP	Screw 9/64-40 L=7.0 .....		千鳥裏板止ネジ .....	4
57		B2130-271-000	Zigzag scale .....		千鳥数字板 .....	1
58		SS-7060610-SP	Screw 3/32-56 L=5.5 .....		千鳥数字板止ネジ .....	2
59		B2126-027-000	Needle bar frame pitman .....		千鳥二又ロッド .....	1
60		B2127-027-000	Oil pad .....		千鳥二又ロッドフェルト .....	1

6. KNEE LIFTER & OIL RECEIVER COMPONENTS

膝上げ装置・油受け関係



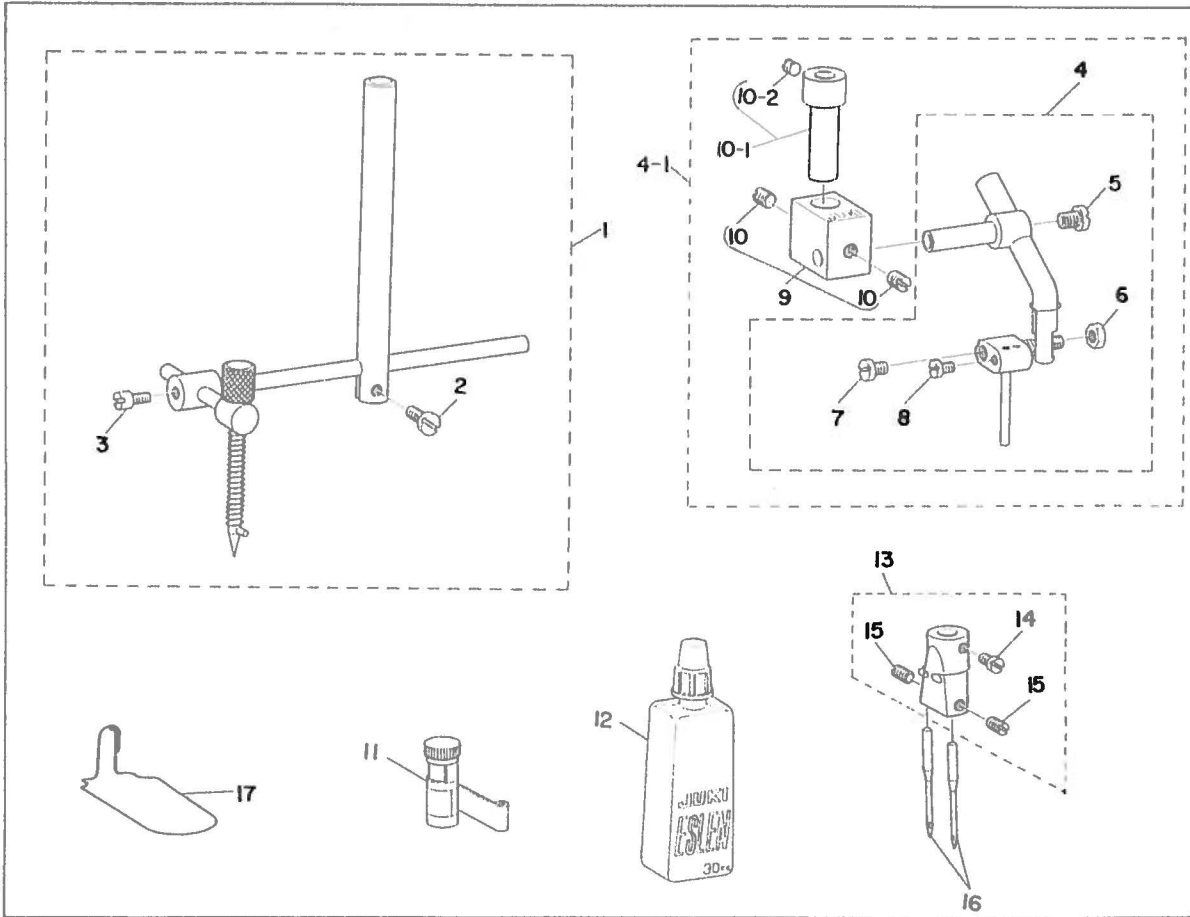
Ref. No.	Note	Part No.	Description	E.C. 変更年月	品名	Amt. Req. 数量
	注記	品番				
1	001	B8217-271-000	Drip pan .....		油受け .....	1
2	002	B8217-391-000	Drip pan .....		油受け .....	1
3	002	B3401-027-0B0	Knee lifter asm. ....		Wヒザ上げ(組) .....	1
4	002	B3401-027-000	Knee driving shaft mounting base .....		ヒザ上げ台 .....	(1)
5	002	B3402-027-000	Knee driving bracket .....		ヒザ上げ体 .....	(1)
6	002	B3408-027-000	Knee driving shaft .....		ヒザ上げ軸 .....	(1)
7	002	B3404-027-000	Spring .....		ヒザ上げブラケットハネ .....	(1)
8	002	B3409-027-000	Knee driving spring .....		ヒザ上げハネ .....	(1)
9	002	B3407-027-000	Knee press plate .....		ヒザ当板 .....	(1)
10	002	SM-9081620-SE	Screw M8x16 .....		ヒザ当板止ネジ .....	(1)
12	002	B3403-027-000	Knee press plate rod .....		ヒザ当板軸 .....	(1)
13	002	SS-9201813-CN	Screw 5/16-18 L=18.0 .....		ヒザ当板軸角ボルト .....	(1)
14	002	B3405-027-0A0	Knee lifter rod asm. ....		突キ上げ板(組) .....	(1)
15	002	B3410-027-000	Knee press rod .....		突キ上げ板軸 .....	(1)
16	002	SS-9201813-CN	Screw 5/16-18 L=18.0 .....		突キ上げ板軸角ボルト .....	(1)
17	002	B3406-027-000	Bolt .....		突キ上げ板角ボルト .....	(1)
18	002	B3411-027-000	Stopper pin .....		ストッパーピン .....	(1)
19	002	SS-8150710-SN	Screw 15/64-28 L=7.0 .....		ストッパーピン止ネジ .....	(1)
20	002	SK-3623200-SC	Wood screw D=6.2 L=32 .....		Wヒザ上げ止ネジ .....	(3)
21	002	WP-0851216-SC	Washer 8.5x18.0x1.2 .....		Wヒザ上げ止ネジ座金 .....	(3)

Note (注記) 001 ..... For LZ-271 LZ-271用  
 002 ..... For LZ-391N LZ-391N用

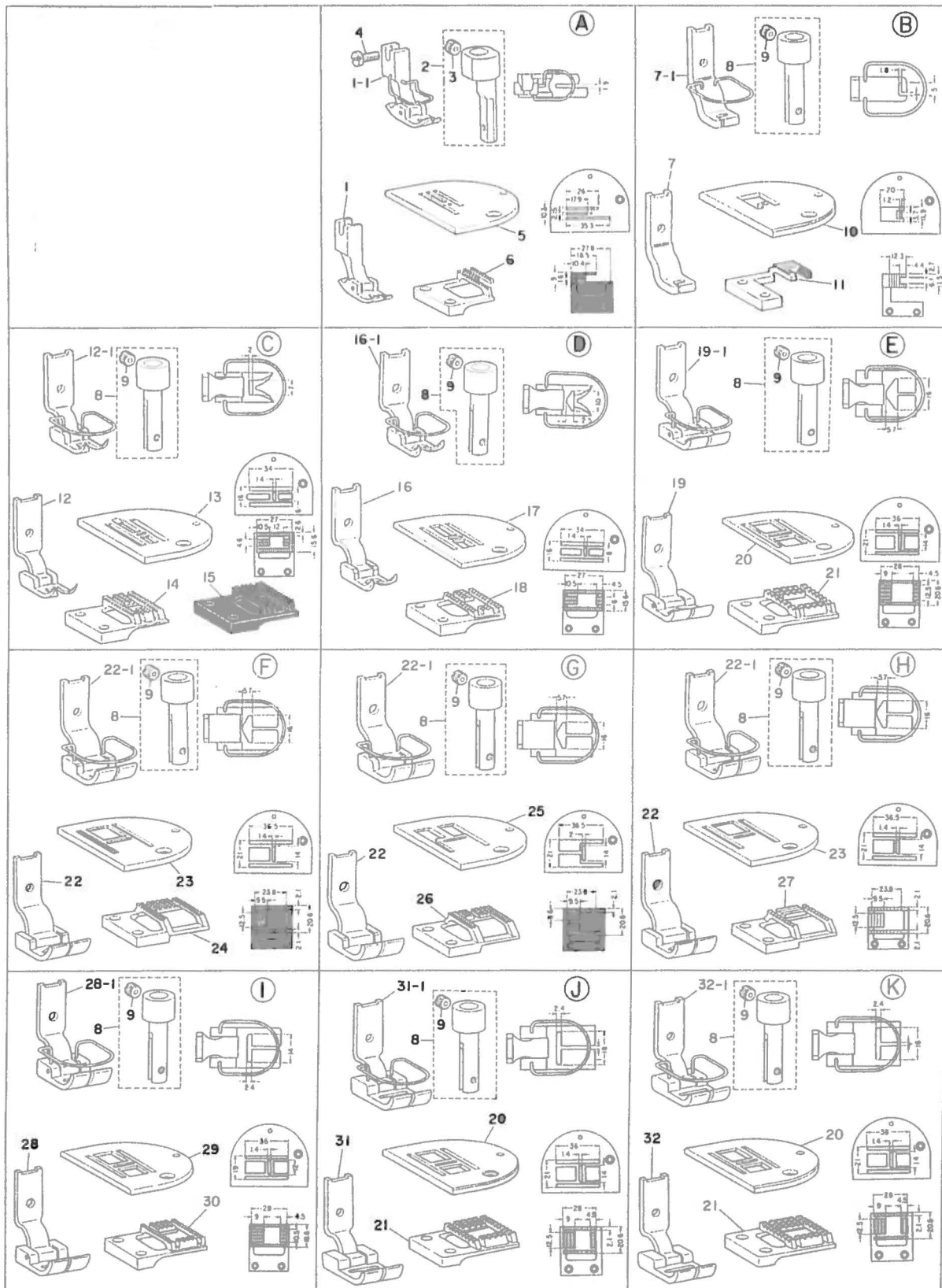


7. SPECIAL ORDER PARTS

特別注文部品



Ref. No.	Note	Part No.	Description	E.C.	品名	Amt. Req.
	注記	品番		変更年月		数量
1		B3351-027-0A0	Compass attachment asm. ....		コンパス (組) .....	1
2		SS-6090910-SP	Screw 9/64-40 L=9.0 .....		コンパス支エ (A) 止ネジ .....	(1)
3		SS-6080720-SP	Screw 1/8-44 L=7.0 .....		コンパス支エ (B) 止ネジ .....	(1)
4		B5001-027-0A0	Scallop attachment asm. ....	D.7/76	スカラップ (組) .....	—
4-1	*	B5001-271-0A0	Scallop attachment asm. ....	C.9/76	B5001-027-0B0 .....	1
5		SS-7090510-SP	9/64-40 L=4.6 .....		糸道案内棒足止ネジ .....	(1)
6		NS-6080210-SP	Nut 1/8-44 .....		カラー止ネジナット .....	(1)
7		SS-7090520-SP	Screw 9/64-40 L=4.5 .....		カラー止ネジ .....	(1)
8		SS-4080310-SP	Screw 1/8-44 L=3.4 .....		糸道案内棒止ネジ .....	(1)
9		B5008-027-0A0	Support block asm. ....		支エブロック .....	(1)
10		SS-8110510-SP	Screw 11/64-40 L=5.0 .....		支エブロック止ネジ .....	(2)
10-1		B1502-391-BA0	Presser bar joint rod (B) asm. ....	A.7/76	押エ棒継足 (B)(組) .....	(1)
10-2		SS-8660530-TP	Screw 1/4-40 L=4.5 .....	A.7/76	押エ棒継足止ネジ .....	(1)
11		B1130-541-0A0	Silicon oil case asm. ....		エスレンケース (組) .....	1
12		B9135-123-0B0	Silicon oil lubricant asm. (30cc) .....		エスレン油差し (組)(30cc) .....	1
13		D1402-391-0A0	Needle bar head asm. ....		二本針用針留メ (組) .....	1
14		SS-6090410-TP	Screw 9/64-40 L=3.5 .....		針棒止ネジ .....	(1)
15		SS-8090540-SP	Screw 9/64-40 L=5.0 .....		針止ネジ .....	(2)
16		D1420-391-000	Needle .....		二本針用針 .....	2
17		B1419-391-000	Needle bar guard .....		針棒安全カバー .....	1



## 3. EXCHANGING PARTS (FOR LZ-391N)

## 交換部品(LZ-391N用)

	用途	USAGE	振巾 Width of Throw	備考	REMARKS
Ⓐ	直進縫用	For straight sewing	0	一般工業用ミシンの押エ、三ツ巻 が取り付けられます。	Presser foot and hemmer foot of conventional industrial machine can be attached.
Ⓑ	紐付用	For cord attaching	3mm(1/8")		
Ⓒ	芯刺し用	For embroidering	5mm(3/16")	送りB1613-040-E0Bは鬼歯です。	B1613-040-E0B is a fang type teeth.
Ⓓ	薄物用	For light weight materials	6mm(1/4")		
Ⓔ	中厚物・厚物用	For medium heavy, heavy weight materials	10mm(3/8")	標準部品	All standard parts.
Ⓕ	厚物用	For heavy weight materials	10mm(3/8")	中ガマ押エをB1835-027-000に交 換すれば、振巾12mmまで可能です。	The zigzag width of throw can be increased to 12mm if the rotary hook presser foot is exchanged to that of B8135-027-000.
Ⓖ	厚物用	For heavy weight materials	10mm(3/8")		
Ⓖ	厚物用	For heavy weight materials	10mm(3/8")	送りB1613-040-A0BはⒻの送り B1613-040-A0Aより、送り歯のピ ッチが荒い。	The feed pitch of the feed dog for this type, B1613-040-A0B is rougher than the pitch of B1613-040-A0A for Ⓕ.
Ⓘ	中厚物・厚物用	For medium heavy, heavy weight materials	10mm(3/8")		
Ⓙ	薄物用	For light weight materials	12mm(15/32")	目飛び防止用、押エ使用。	Skip-stitch preventing presser foot used.
Ⓚ	厚物用、段縫向	For heavy weight, stepped-sewing materials	12mm(15/32")		

※ ⒶⒷⒸⒹⒻⒼⒿ……………カマはB1830-027-0A0を使用して下さい  
Use sewing hook No.B1830-027-0A0.



8. EXCHANGING PARTS (FOR LZ-391N)

交換部品(LZ-391N用)

Ref. No.	Note	Part No.	Description	E.C.	品名	Amt. Req.
	注記	品番		変更年月		数量
1		B1524-012-0A0	Presser foot asm. ....		直進用押工(組).....	1
1-1		B1524-012-0B0	Presser foot asm. ....	A.3/76	直進用押工(組).....	1
2		D1502-391-DA0	Presser bar joint rod (D) asm. ....		押工棒継足(D)(組).....	1
3		SS-8660530-TP	Screw 1/4-40 L=4.5 .....		押工棒継足止ネジ.....	(1)
4		SS-7091110-SP	Screw 9/64-40 L=10.5 .....		押工止ネジ.....	1
5		D1109-391-FA0	Throat plate (F) asm. ....		針板(F)(組).....	1
6		D1613-391-F00	Feed dog (F) .....		直進用送り(F).....	1
7		B1524-040-C0A	Presser foot (C) .....		押工(C).....	1
7-1		B1524-040-CAA	Presser foot (C) asm. ....	A.3/76	押工(C)(組).....	1
8		B1502-391-AA0	Presser bar joint rod (A) asm. ....		押工棒継足(A)(組).....	1
9		SS-8660530-TP	Screw 1/4-40 L=4.5 .....		押工棒継足止ネジ.....	(1)
10		B1109-040-CA0	Throat plate (C) asm. ....		針板(C)(組).....	1
11		B1613-040-C00	Feed dog (C) .....		送り(C).....	1
12		B1524-040-EA0	Presser foot (E) asm. ....		押工(E)(組).....	1
12-1		B1524-040-EB0	Presser foot (E) asm. ....	A.3/76	押工(E)(組).....	1
13		B1109-040-EA0	Throat plate (E) asm. ....		針板(E)(組).....	1
14		B1613-040-E0A	Feed dog (E) .....		送り(E).....	1
15		B1613-040-E0B	Feed dog (E') .....		送り(E').....	1
16		B1524-040-AA0	Presser foot (A) asm. ....		押工(A)(組).....	1
16-1		B1524-040-AB0	Presser foot (A) asm. ....	A.3/76	押工(A)(組).....	1
17		B1109-040-DA0	Throat plate (D) asm. ....		針板(D)(組).....	1
18		B1613-040-D00	Feed dog (D) .....		送り(D).....	1
19		B1524-391-DA0	Presser foot (D) asm. ....		押工(D)(組).....	1
19-1		B1524-391-DB0	Presser foot (D) asm. ....	A.3/76	押工(D)(組).....	1
20		B1109-391-NA0	Throat plate (N) asm. ....		針板(N)(組).....	1
21		B1613-391-N00	Feed dog (N) .....		送り(N).....	1
22		B1524-040-DA0	Presser foot (D) asm. ....		押工(D)(組).....	1
22-1		B1524-040-DB0	Presser foot (D) asm. ....	A.3/76	押工(D)(組).....	1
23		B1109-040-AA0	Throat plate (A) asm. ....		針板(A)(組).....	1
24		B1613-040-A0A	Feed dog (A-1) .....		送り(A-1).....	1
25		B1109-040-BA0	Throat plate (B) asm. ....		針板(B)(組).....	1
26		B1613-040-B00	Feed dog (B) .....		送り(B).....	1
27		B1613-040-A0B	Feed dog (A-2) .....		送り(A-2).....	1
28		D1524-391-NA0	Presser foot (N) asm. ....		押工(N)(組).....	1
28-1		D1524-391-NB0	Presser foot (N) asm. ....	A.3/76	押工(N)(組).....	1
29		D1109-391-RA0	Throat plate (R) asm. ....		針板(R)(組).....	1
30		D1613-391-R00	Feed dog (R) .....		送り(R).....	1
31		D1524-391-PA0	Presser foot (P) asm. ....		薄物用押工(P)(組).....	1
31-1		D1524-391-PB0	Presser foot (P) asm. ....	A.3/76	押工(P)(組).....	1
32		D1524-391-QA0	Presser foot (Q) asm. ....		押工(Q)(組).....	1
32-1		D1524-391-QB0	Presser foot (Q) asm. ....	A.3/76	押工(Q)(組).....	1





Part No. 品番	Page 頁	Item 項目	Ref. No.	Part No. 品番	Page 頁	Item 項目	Ref. No.	Part No. 品番	Page 頁	Item 項目	Ref. No.	Part No. 品番	Page 頁	Item 項目	Ref. No.
COTTER PIN		割ピン		SS-2090710-SP	2	1	46	SS-7090510-SP	2	1	5	SS-8150710-SP	10	5	15
PD-0201500-00	8	4	27	SS-2090710-SP	10	5	56	SS-7090510-SP	12	7	5	SS-8151150-SP	4	2	4
PD-0201500-00	10	5	53	SS-2110920-TP	2	1	66	SS-7090520-SP	2	1	44	SS-8151150-SP	4	2	14
				SS-3090610-SP	6	3	33	SS-7090520-SP	12	7	7	SS-8151150-SP	6	3	16
SNAP RING		Eリング		SS-4080310-SP	12	7	B	SS-7091110-SP	2	1	2	SS-8151150-SP	10	5	45
RE-0500000 K0	8	4	24	SS-4080620-TP	8	4	29	SS-7091110-SP	10	5	2	SS-8151350-SP	4	2	17
RE-0500000 K0	10	5	31	SS-4090810-SP	B	4	31	SS-7091110-SP	14	8	4	SS-8151550-SP	4	2	32
RE-0600000 K0	4	2	46	SS-6060210-SP	2	1	69	SS-7110710-SP	2	1	48	SS-8660330-SP	10	5	41
				SS-6080720-SP	12	7	3	SS-7110710-SP	4	2	47	SS-8660530-TP	4	2	26
PLUG		栓		SS-6090410-TP	12	7	14	SS-7111120-SP	2	1	12	SS-8660530-TP	8	4	14
TA-0300503-R0	4	2	13	SS-6090510-SP	2	1	34	SS-7111410-SP	8	4	20	SS-8660530-TP	12	7	10-2
TA-0300503-R0	4	2	29	SS-6090610-SP	10	5	6	SS-7111410-SP	8	4	37	SS-8660530-TP	15	8	3
TA-0300503-R0	6	3	58	SS-6090620-SP	2	1	21	SS-7111410-SP	8	4	46	SS-8660530-TP	15	8	9
				SS-6090620-SP	2	1	29	SS-7121410-SP	10	5	33	SS-8660610-TP	4	2	10
HINGE SCREW		铰ネジ		SS-6090910-SP	B	4	16	SS-7150940-SP	6	3	37	SS-8660810-TP	6	3	4
SD-0460571-SD	8	4	6	SS-6090910-SP	12	7	2	SS-7681750-TP	4	2	B	SS-8660810-TP	6	3	6
SD-0640231-SP	10	5	25	SS-6092120-SP	4	2	55	SS-8090410-SP	2	1	14	SS-8660810-TP	6	3	9
SD-0700251-SP	8	4	11	SS-6110460-TP	6	3	45	SS-8090410-SP	10	5	27	SS-8660810-TP	6	3	11
SD-0920321-SP	8	4	5	SS-6110460-TP	6	3	49	SS-8090540-SP	12	7	15	SS-8660810-TP	10	5	43
SD-0950802-SH	8	4	52	SS-6110620-TP	6	3	43	SS-8090670-SP	2	1	52	SS-8681130-SP	4	2	9
SD-0950802-SH	10	5	23	SS-6110620-TP	6	3	55	SS-8110510-SP	2	1	63	SS-9121340-CP	10	5	36
SD-0950806-SP	10	5	22	SS-6111110-SP	6	3	67	SS-8110510-SP	6	3	63	SS-9181520-CP	6	3	21
SD-1020701-SP	8	4	40	SS-6111110-SP	10	5	9	SS-8110510-SP	12	7	10	SS-9181520-CP	6	3	23
SD-1020961-SP	B	4	47	SS-6111440-SP	6	3	60	SS-8110750-SP	2	1	37	SS-9181520-CP	6	3	28
SD-1021251-SP	8	4	58	SS-6111620-SP	6	3	52	SS-8110750-SP	2	1	64	SS-9201813-CN	11	6	13
SD-1150701-SP	B	4	1B	SS-6121610-SP	8	4	43	SS-8110750-SP	6	3	40	SS-9201813-CN	11	6	16
				SS-6121610-SP	10	5	29	SS-8150410-SP	4	2	41	SS-9660720-SP	10	5	8
SCREW		ネジ		SS-6151440-SP	8	4	25	SS-8150410-TP	10	5	39				
SK-3623200 SC	11	6	20	SS-6160680-SP	6	3	22	SS-8150510-TP	10	5	38	WASHER	座金		
SM-9081620 SE	11	6	10	SS-6160680-SP	6	3	29	SS-8150710-SN	11	6	19	WP-0371016-SD	10	5	3
SS-1060610-SP	2	1	39	SS-6661110-SP	8	4	60	SS-8150710-SP	4	2	24	WP-0480856-SP	10	5	34
SS-2060510-SP	2	1	7	SS-7060610-SP	10	5	58	SS-8150710-SP	4	2	37	WP-0480856-SP	10	5	51
SS-2060510-SP	2	1	41	SS-7080510-SP	4	2	53	SS-8150710-SP	4	2	51	WP-0501016-SP	8	4	57
SS-2090710-SP	2	1	4	SS-7081310-SP	4	2	57	SS-8150710-SP	8	4	9	WP-0B51216-SC	11	6	21





**JUKI**<sup>®</sup>  
**TOKYO JUKI INDUSTRIAL CO.,LTD.**  
Business Office : Kabuki-cho, Shinjuku-ku, Tokyo, Japan  
Cable Address : JUKI TOKYO  
Telex : 22967 JUKITK  
Telephone : Tokyo 203-8241

  
**東京重機工業株式会社**

本 社・東京都調布市国領町 8 の 2 TEL(480)1111(大代)

Printed in Japan

From the library of: Superior Sewing Machine & Supply LLC